



**SOLID**  
TO SUCCEED

TELESCOPIC BOOM LIFT

# XGS20K



The print does not belong to the contract, nor a part of the vehicle purchase contract. We reserve the right to revise the product model, parameters, configuration based on the continuous improvement requirements of the product, without prior notice. Pictures are for reference only, and the specific product shall depend on the real product.



# XGS20K

## Telescopic boom lift

### FEATURES

#### MEASUREMENTS

20.5m working height  
Up to 300kg lift capacity

#### PRODUCTIVITY

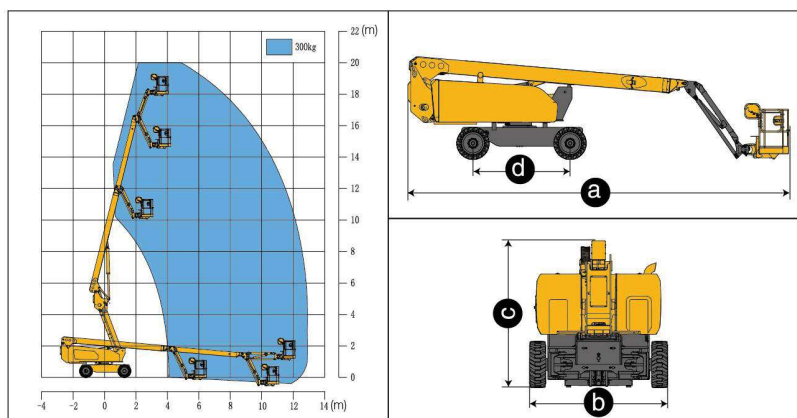
1.83m × 0.76m working platform  
4 driving wheels  
2 steering wheels  
4 wheel brake system  
45% theoretical gradeability  
360° continuous turntable rotation  
160° platform rotation  
Lift and lower alarm  
Drive alarm  
Tilt alarm  
Enable switch  
Overload alarm  
Hourmeter recorder  
Solid rubber tires  
Axle balance system  
Hydraulic oil cooler  
Proportional joystick control  
Platform automatic leveling system  
Initiative anti-extrusion system

#### POWER

Engine protection devices  
Kubota Euro stage V emission  
12V DC emergency power

### OPTIONS

Tool tray  
Platform working light  
Foam-filled rough terrain tires



Item	Unit	XGS20K
Working height	m	20.5
Platform height	m	18.5
Working radius	m	13.2
Lift capacity	kg	300
Occupant capacity	-	2
Boom luffing range	°	-5~+76
Fly jib luffing range	°	-65~+70
Turntable rotation	°	360
Platform rotation	°	160
Drive speed (retracted/extended)	km/h	4.8/0.6
Turning radius (inside/outside)	m	3.1/5
Tailswing	mm	1630
Ground clearance	mm	300
Gradeability	%	45
Tires	-	835×295
Power source	-	Kubota V2403
Rated power	kW/(r/min)	36.8/(2700)
Fuel tank	L	90
Hydraulic tank	L	120
Weight	kg	8500
Platform size	mm	1830×760
a Length (transportation)	mm	9800/7400
b Width	mm	2490
c Height	mm	2640
d Wheelbase	mm	2500

SOLID TO SUCCEED