

TELESCOPIC BOOM LIFT

XGS40E



The print does not belong to the contract, nor a part of the vehicle purchase contract. We reserve the right to revise the product model, parameters, configuration based on the continuous improvement requirements of the product, without prior notice. Pictures are for reference only, and the specific product shall depend on the real product.

XGS40E

Telescopic boom lift

FEATURES

MEASUREMENTS

40.2m working height
Up to 300/460kg lift capacity

PRODUCTIVITY

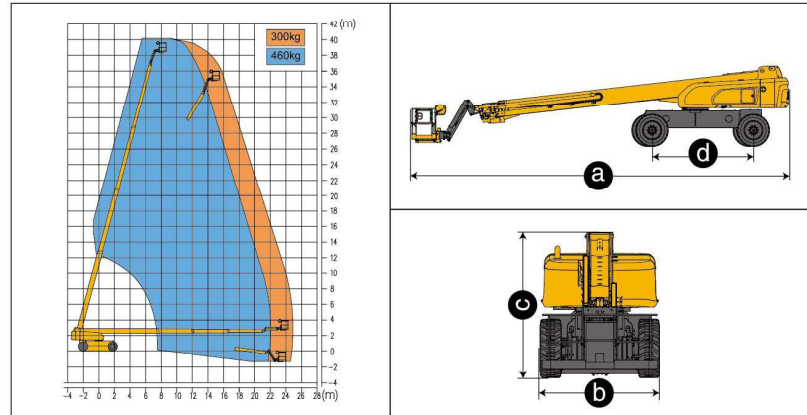
2.4m × 0.9m steel platform
4 driving wheels
4 steering wheels
40% theoretical gradeability
360° continuous turntable rotation
160° platform rotation
Enable switch
Hourmeter recorder
Drive alarm
Tilt alarm
Overload alarm
Axle balance system
Lift and lower alarm
Turntable control box
Flashing beacon
Hydraulic oil cooler
Steering lever control
Lockable canopy
Platform automatic leveling system
Fully proportional multi-function controls
Foam-filled rough terrain tires

POWER

Engine protection devices
Kubota Euro stage V emission
12V DC emergency power

OPTIONS

Tool tray
Platform working light
AC power to the platform
Platform anti-collision device



| Item | Unit | XGS40E |
|--|------------|-----------------|
| Working height | m | 40.2 |
| Platform height | m | 38.2 |
| Working radius | m | 24.9 |
| Lift capacity | kg | 300/460 |
| Occupant capacity | - | 3 |
| Boom luffing range | ° | -6.5~+75 |
| Fly jib luffing range | ° | -60~+70 |
| Turntable rotation | ° | 360 |
| Platform rotation | ° | 160 |
| Drive speed (retracted/extended) | km/h | 5/0.5 |
| Turning radius axle retracted (inside/outside) | m | 3.3/6.8 |
| Turning radius axle extended (inside/outside) | m | 2.4/5.8 |
| Tailswing | mm | 2355/1700 |
| Ground clearance | mm | 360 |
| Gradeability | % | 40 |
| Tires | - | 445/50D710 |
| Power source | - | Kubota V3307 |
| Rated power | kW/(r/min) | 54.6/(2200) |
| Fuel tank | L | 180 |
| Hydraulic tank | L | 260 |
| Weight | kg | 21460 |
| Platform size | mm | 2400×900 |
| Transportation dimension | mm | 12500×2490×3000 |
| a Length | mm | 14060 |
| b Width | mm | 2490 |
| c Height | mm | 3000 |
| d Wheelbase (axle retracted/axle extended) | mm | 2490/3800 |

SOLID TO SUCCEED